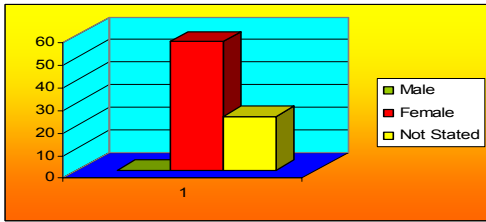
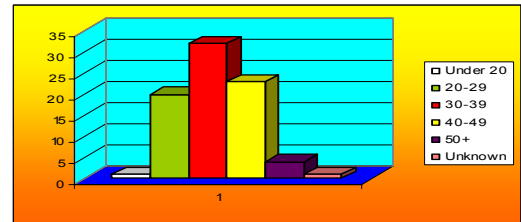


Gender

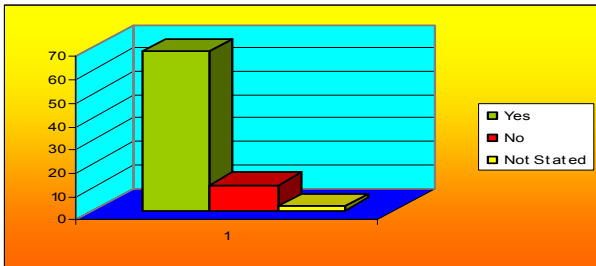


Do you understand the Smiley Faces Symbol in the brothel listings at the back of the magazine?

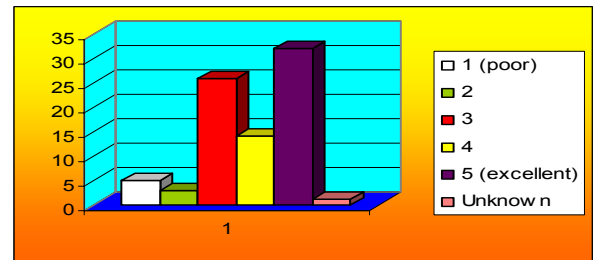
Age



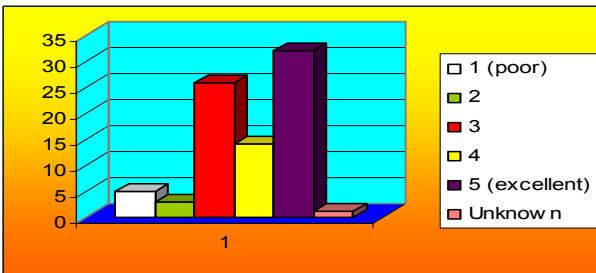
How would you rate your understanding of the Smiley Faces Project?



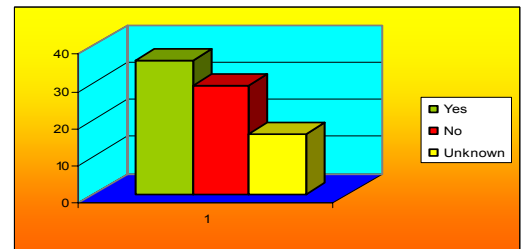
How would you rate your understanding of the conditions of this project?



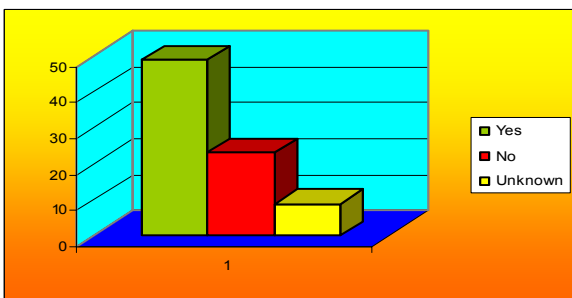
Has access to RhED resources (magazines, STI information, translated information) changed since the introduction of Smiley Faces?



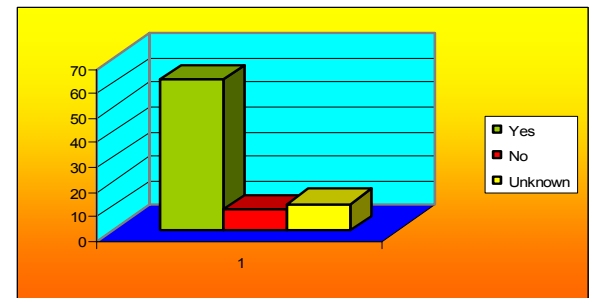
If a workplace did not have a Smiley Faces symbol would it prevent you from conducting your business there?



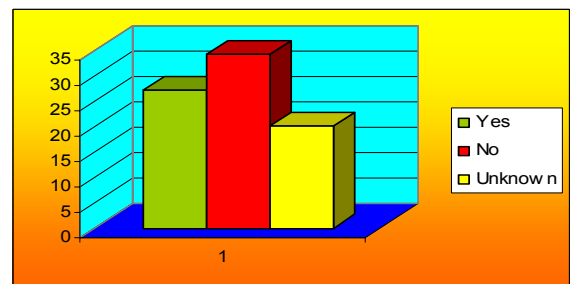
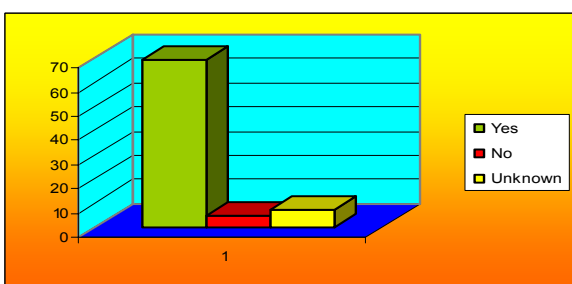
Has this project in your opinion lifted industry standards?



Do you believe this project is of assistance to you as a service provider?



Have you seen any changes since the introduction of the Smiley Faces project?





Smiley Faces Survey Results



Comments:

Have you seen any changes since the introduction of the Smiley Faces project?

- Information concerning tax obligations and how to pay.
- Bosses eager to be part of Smiley Faces project to make brothel seem friendlier.
- Promotes awareness and issues
- Owners strict on D.C health checks on clients.
- Some places that didn't pass on magazines before are now doing so.
- More understanding about job and the award.
- More professional workplace and women.
- More brothels have Smiley Faces
- More magazines.
- The girls are aware that they have back-up, if they have any problems with management or a client eg bullying by management or assault by a client.
- Everything is regulated better and a lot more supportive.
- Availability of current and relevant information.
- More information available.
- Better information and resources, helpful RhED workers.

Additional Comments:

- Please keep us informed of new policies as you always do.
- Have always had access to RhED resources since starting in the industry.
- Keep up the good work.
- Not able to give more informative opinions, I have not seen copy of magazine for about 18 months.
- Perhaps give key chains instead of badges as most girls have lockers but may not wish to wear a badge.
- Great accessible information and support.
- Recently came to Melbourne. Your presence is well advertised as I knew about RhED before getting work.
- I have never heard of the Smiley Faces project.
- Our workplace has always been informative and allowed access to RhED because you do such a great job.
- They help the girls to know where to get support.
- Many thanks for the visit today.
- Only just learnt about the Smiley Faces survey.
- I have been at the same place all this time and have always been RhED friendly.
- New to the industry and found out about this by RhED on brothel outreach.
- Didn't previously know about this project but excellent idea.
- Have your magazines very informative.
- Smiley Faces project promotes better communication.
- Where I work RhED have always been around and RhED are welcomed in. Where I work has always been excellent in industry standards but from what I hear from other girls it sounds like things have gone backwards in a lot of places. Smiley Faces might have been given out too easily and that not all places who have a smiley face deserve it. We don't see RhED enough and would also like to see RhED do something about project respect degrading the legal industry and us as workers who do not want their help.